

Golf cart battery assembly process

1. First assemble the battery cells together and install an epoxy board in the middle of the battery core for isolation.



2. Use tape to secure the battery core tightly to prevent it from loosening.



3. Use epoxy board to fix around the battery



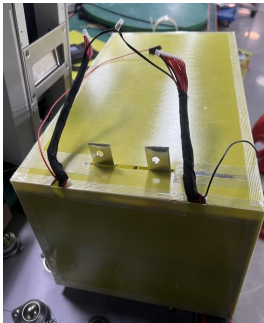
4. Use laser welding to weld the studs on the battery core.



5. Fix the connecting piece and collection cable on the cell bolts



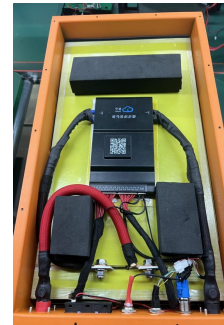
6. Cover the top epoxy board



7. Connect the BMS lines



8. Put the battery into the box and fix the cache cotton on the battery



9. Close the lid and you're done

